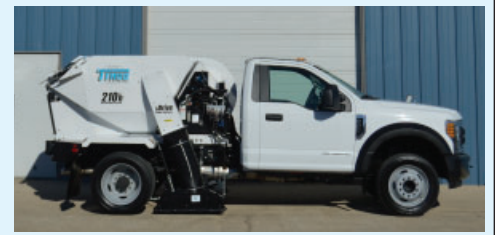




**210h**<sup>®</sup>  
AIR SWEEPER

**GENERAL SPECIFICATIONS**



**MODEL 210h<sup>®</sup> REGENERATIVE AIR SWEEPER<sup>®</sup>**  
**HYDROSTATIC DRIVE/CONVENTIONAL CAB CHASSIS**

**HYDRAULICS**  
**hDRIVE<sup>®</sup> POWER SYSTEM**

Main pump type ..... Piston pump  
Reservoir ..... 17 gal (64 L)  
Main system pressure ... 3500 psi (24,132 kPa)  
Main pump drive ..... Direct drive from transmission PTO, operates blower, dump door, and pick-up head  
Broom pump ..... Vane type  
Belt driven from blower shaft  
Filter ..... 10 micron in-line  
Hydraulic oil ..... Extended life  
Cooler ..... Air to oil w/thermostatically controlled electric fan  
Hydraulic level/temperature shutdown system  
Hydraulic oil filter restriction indicator  
Hydraulic oil sight/temperature gauge

**BLOWER**

Aluminum alloy, high volume, open face turbine  
Purpose ..... Creates air blast and suction  
Bearings ..... Anti-friction  
Housing ..... Abrasion resistant, replaceable liner  
Drive ..... Hydraulic direct drive

**DUST SEPARATOR**

Type ..... Cyclonic, multipass, centrifugal separation  
Cylindrical area ..... 20 x 22.5 in (508 x 1549 mm)  
Location ..... Adjacent to hopper  
Particulate removal achieved through 22.5 in (572 mm) skimmer slot into skimmer hood  
Inspection/cleanout port w/extended plug handle

**HOPPER**

Capacity (volumetric) ..... 2.4 yd<sup>3</sup> (1.83 m<sup>3</sup>)  
Capacity (useable) ..... 2.1 yd<sup>3</sup> (1.61 m<sup>3</sup>)  
Construction ..... Welded steel plate  
Dump door opening ..... 52 x 23 in (1321 x 584 mm)  
Dump door hydraulically opened/closed  
Dumping method ..... Hydraulic with tilt up  
Dumping height ..... 60 in (1524 mm)  
Dumping clearance height ..... 144 in (3645 mm)  
Hopper drip edge extension

**PICK-UP HEAD**

Type ..... Dual chamber  
Function ..... Delivers air blast and suction  
Width (inside dimension) ..... 78 in (1981 mm)  
Pick-up head area ..... 2028 in<sup>2</sup> (1.31 m<sup>2</sup>)  
Suspension ..... 4 springs, 2 drag links  
Skids ..... DUO-SKID<sup>®</sup>, long life carbide  
Suction hose diameter ..... 12 in (305 mm)  
Pressure hose diameter ..... 12 in (305 mm)  
Pressure bleeder ..... Integral for leaf/light material pickup  
Reverse pick-up head system

**GUTTER BROOM, LEFT, Patented**

Standard equipment includes floodlight and parabolic mirror  
Drive ..... Constant speed non-reversible hydraulic motor  
Adjustment ..... Adjustable for down pressure, pattern and wear  
Down pressure ..... Automatically adjusts to requirement  
Flexibility ..... All directions, Integral anti-damage "swing away" relief valve  
Broom ..... Poly wafer 36 in (914 mm)

**CONTROL SYSTEM**

**BlueLogic<sup>®</sup> Control System**

Multiplexed electrical system includes hardware and TYMCO designed software that integrates the in-cab controls to all sweeper functions; as well as provides intelligent safety features, assists in troubleshooting through LED input/output diagnostics, and controls the hDrive Power System. Specific to the 210h, BlueLogic communicates with the truck to engage the PTO and maintain the blower at a constant speed (low or high), and monitors and controls the hydraulic oil level and temperature shutdown system.

**Interior Components**

Leaf pressure bleeder control, illuminated control switches: pick-up head, gutter broom, blower on/off (2 speeds), dust control water system nozzles (if applicable), safety lights

**Exterior Components**

Dump switch, BlueLogic multiplex module

**SAFETY/WARNING DEVICES**

Back-up alarm  
Alternating LED rear flashers (2)  
BlueLogic<sup>®</sup> Control System provides several safety interlocks which includes stopping the blower when the hopper is raised/hopper door is opened, shutting down the hydraulic system when hydraulic oil temperature is too high or the level is too low and disengaging the PTO when excessive ground speed is met (default is 18 mph). It also provides ASI, which will lift the gutter broom when the transmission is placed in reverse.  
Hopper safety prop

**OPTIONAL EQUIPMENT**

Abrasion protection package  
Amber beacon light  
Auxiliary fuse panel  
Auxiliary hand hose 6 in dia. (152 mm)  
Backpack blower storage box  
Camera/monitor system  
Dust control system ..... 30 gal (113 L)  
Gutter broom ..... Right (in lieu of left)  
Broom ..... Poly or steel digger 32 in (812.8 mm) (Ford F-450 only)  
Hopper drain system  
Hopper slide-out screen  
Hydraulic tank heater  
Light bar, cab mounted, LED  
Magnet, front bumper mounted, light duty  
Rubber lined blower  
Shop air purge, dust control system  
Stainless steel options:  
Hopper:  
Hopper weldment  
Hopper door  
Inspection door  
Skimmer hood  
Slide-out hopper screen  
Blower housing  
Dust separator  
Hopper drain  
Hopper inspection door  
Hopper screen  
Auxiliary hand hose hardware  
Paint color (other than TYMCO standard white)

*Special options are available for your individual requirements. Contact your local dealer or TYMCO.*

**CHASSIS AVAILABLE**

Ford F-450  
Ford F-350